

Consulting by Degrees

Experience. Grow. Transform.

We live in an incredible time of transformation for business, society and the workplace. The emergence of cloud, analytics, mobile and social are driving leaders to reevaluate their thinking – to adopt technology as a strategic business driver rather than merely an enabling strategy. It's a shift that's transforming organizations, centered on their relationships with customers and the superior experience they deliver to them, and flows through every aspect of their supporting operations and culture.

IBM Global Business Services (GBS) consultants help organizations fundamentally redesign experiences to create new sources of value, digitally reinvent operations for great efficiency and transform entire enterprises through the use of cognitive. This is possible by taking advantage of IBM's global reach, outcome-focused methodologies, domain skills and deep industry expertise.

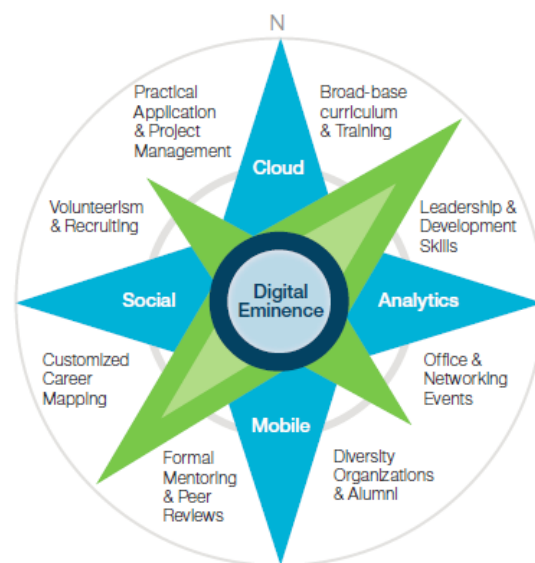
We are looking for enthusiastic and digitally savvy candidates with the skills, creativity and passion to solve some of society's most complex problems with your innovative thinking and ideas. We seek the best and brightest from all walks of life – from business to engineering; communications to computer science; analytics to application development and everything in between. We look for forward-thinking candidates with leadership experience to join IBM Consulting by Degrees – our world-class program designed to groom top, entry-level consultants into tomorrow's leaders.

Consulting by Degrees was developed to help you experience, grow and transform your consulting career. By providing a variety of project and role experiences, and deep skills development opportunities, our consultants are prepared to launch and accelerate their careers successfully.

The Consulting by Degrees program targets high performers and provides focused training, one-on-one mentoring, and career guidance to help you gain the expertise and know-how that you need to become future partners and executives.

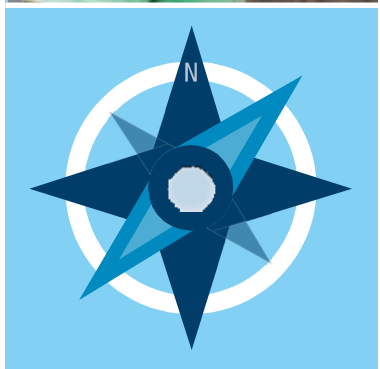
Experience the Exceptional Opportunities

- Join an elite development program, unmatched in the marketplace
- Be part of a unique and specialized community; connect locally with your peers and managers
- Foster your collaboration and networking skills with globally accessible teams
- Develop a specialized skillset through experiential learning and a tailored education path
- Experience a variety of role(s) and projects, as well as peer-led initiatives
- Benefit from customized career planning and mentoring



We hope you will take advantage of these exceptional growth opportunities and welcome your application to the Consulting by Degrees program.

Visit ibm.com/start/consulting/CbD



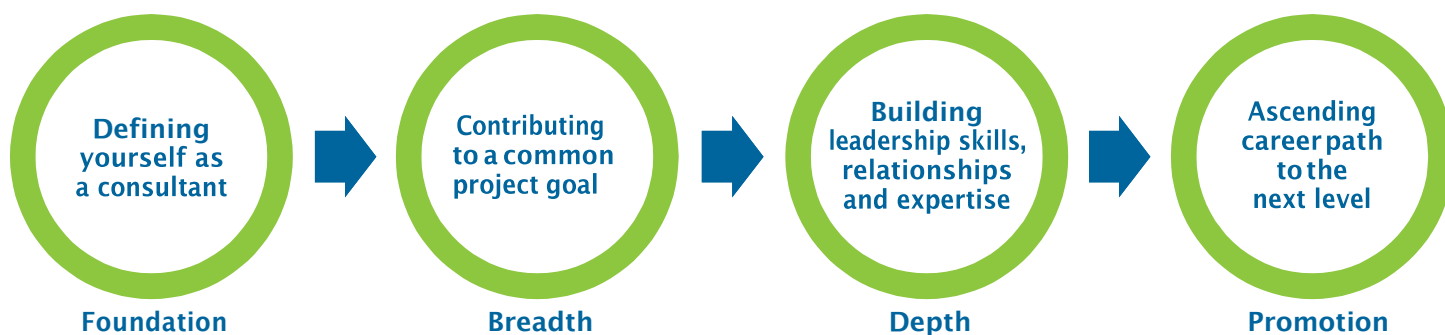
Grow your skills and expertise

Work for us, develop yourself

Once hired, you'll join your local IBM office community, where you'll be part of an ever-changing and collaborative work environment, gaining access to some of the brightest minds in the business. You'll work on teams delivering solutions for FORTUNE 1000 global companies and government agencies. You'll leverage the innovative solutions and services from IBM (we are the world's largest, privately held research group, the largest consultancy and largest global digital agency) supported by the award-winning thought leadership from our Institute for Business Value (IBV), to help clients tackle tough problems. You'll also become a member of our global Consulting by Degrees social network so that you can immediately connect, learn and share with peers and mentors in a variety of ways, both in person and online.

What's the training like?

Throughout the program, you'll benefit from continuous on-the-job learning and mentorship from some of the best and brightest minds in the business. You'll also have a tailored education plan with both required and recommended courses that will serve as building blocks to developing your expertise and attaining promotion to the next level and beyond.



Transform your community and your career

Pay it forward

Our consultants support various initiatives across the business, whether it is recruiting our next generation of new hires, peer mentoring, or leading internal improvement processes and giveback opportunities. At IBM, you will be exposed to corporate and community programs that promote the IBM values of social and corporate responsibility, values that are shared and experienced locally and globally. You will also be invited to explore the hundreds of diversity organizations and local IBM clubs in your area, so you can become part of our extended community in North America.

Accelerate your Career Path

As you advance through your customized career plan, you'll have an opportunity to work with your manager to accelerate your career by developing and deepening your expertise in the specialty area that best fits your skills and goals, as well as our greatest business need.

What do we look for in a successful IBM consultant?

- Ability to thrive in an ever changing, technology based consulting environment
- Demonstrated leadership experience and ability to adapt, with willingness to readily take ownership of tasks and problems, which often extend beyond initial scope of responsibility
- Thorough and analytical, with capability to apply logic to solve problems
- Ability to handle multiple tasks concurrently and meet deadlines, while maintaining focus in an environment with conflicting demands
- Drive to overcome the most challenging or difficult obstacles and look for ways to improve results
- Initiative to actively seek new knowledge and improve skills
- Strong interpersonal skills with ability to collaborate and work effectively with individuals, strengthening relationships to achieve win-win solutions
- Ability to communicate complex situations clearly and simply by listening actively and conveying difficult messages in a positive manner
- A passion for innovative ideas, coupled with the ability to understand and assimilate different points of view
- A minimum GPA of 3.2 is a preferred qualification of this position.